

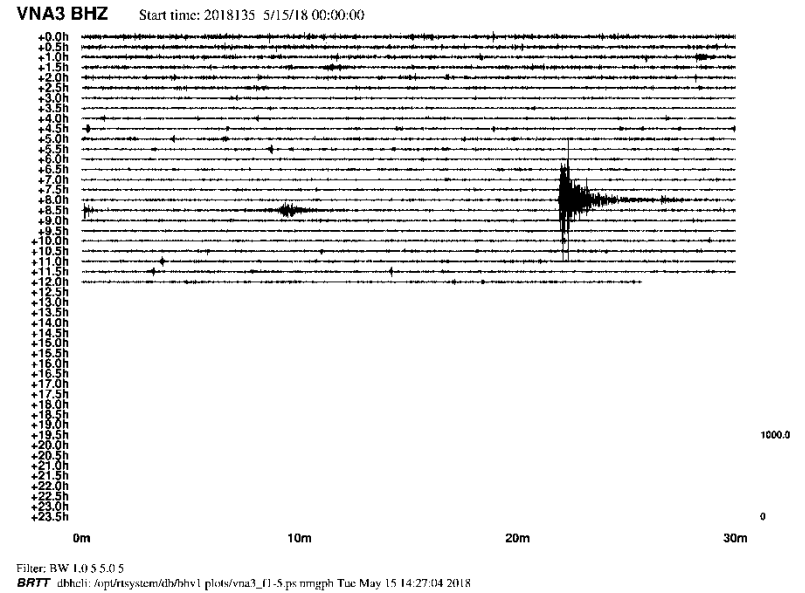
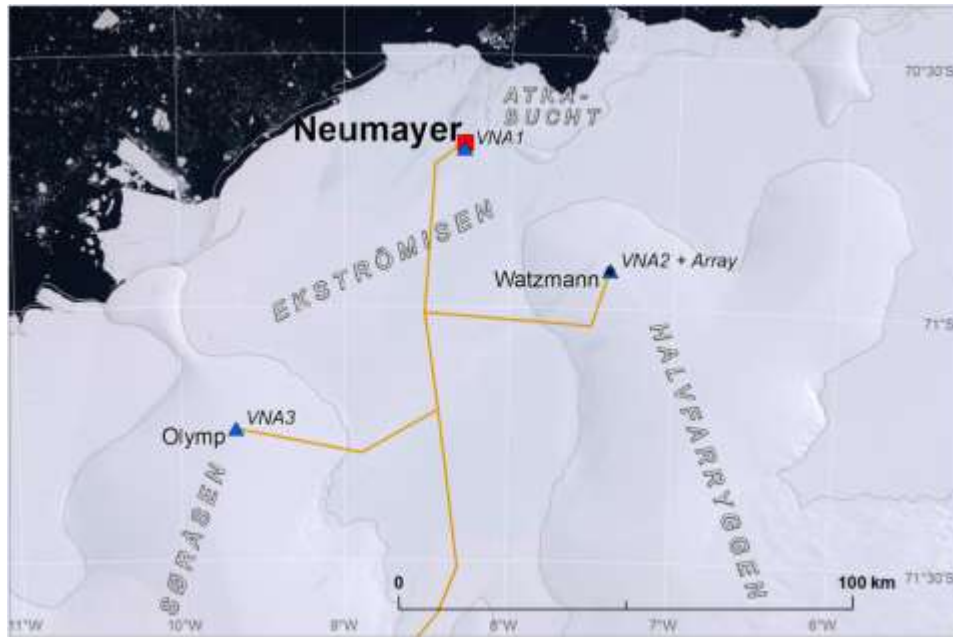








# Geofizika/Szeizmológia



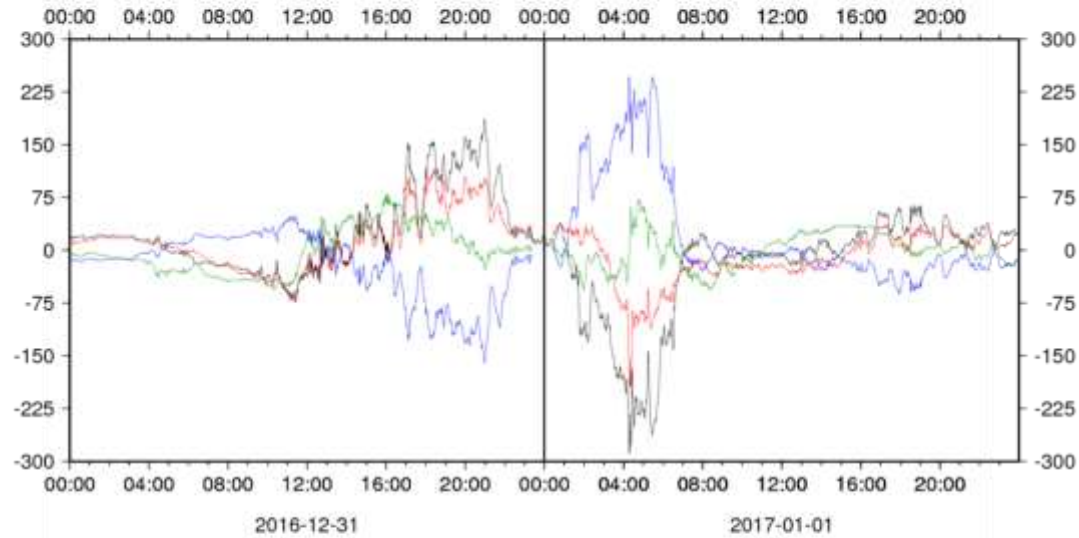
Fotó: Alfons Eckstaller

Fotó: Alfons Eckstaller

# Geofizika/Mágnesség

## Geomagnetic Field Variations at Neumayer-III, Antarctica

Preliminary adjusted 3-Component Fluxgate Data and Overhauser Total Intensity (minute means)



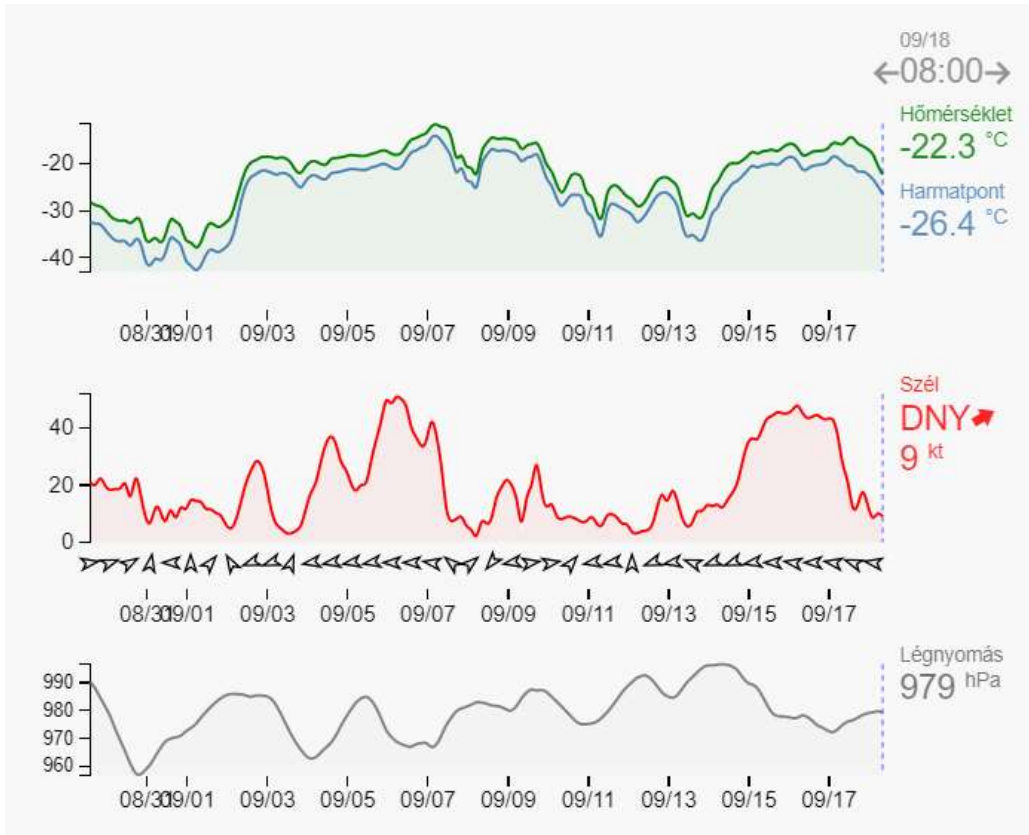
Fotó: Alfons Eckstaller



Fotó: Stefan Christann

# Meteorológia/szinoptikus állomás

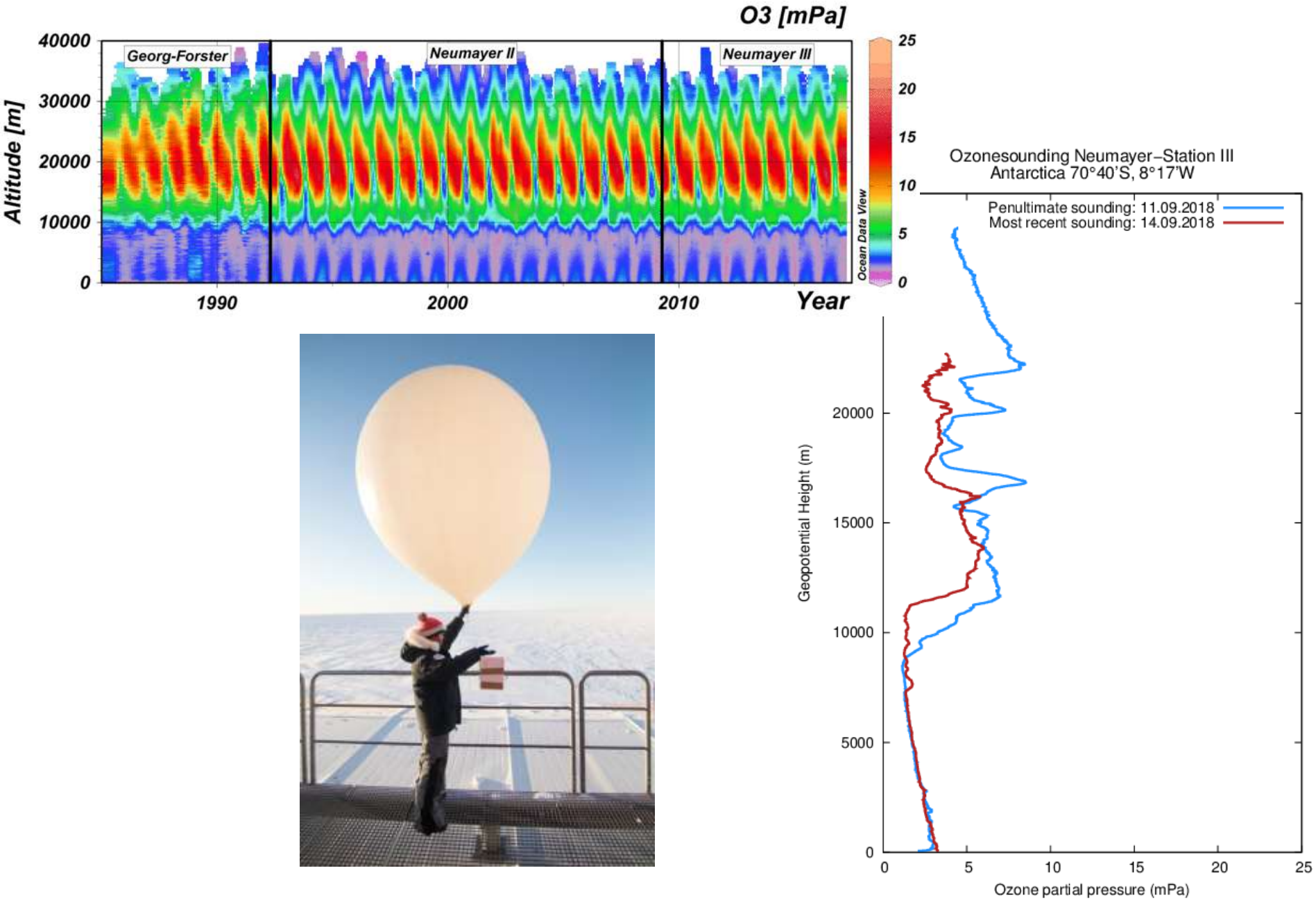
AAXX 18094 89002 42/84 82409 11223 21264 39733 49792 57007 8801/



Fotó: AWI



# Meteorología/Ballon



# Biofizika/Pingvinek

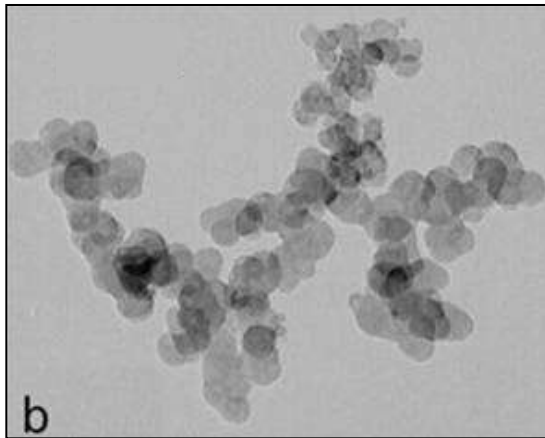




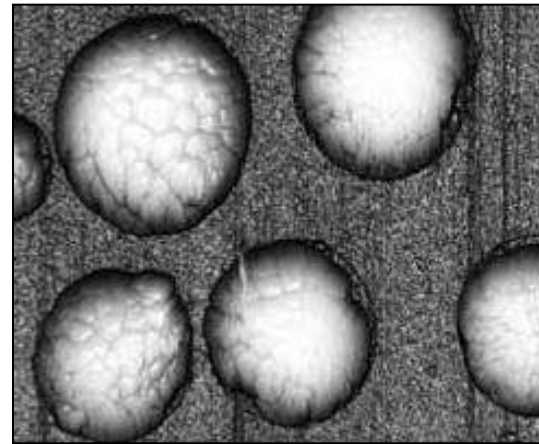


# Mik azok az aeroszolok?

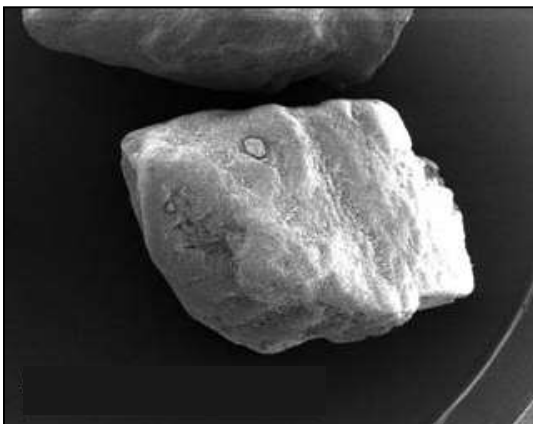
dízel korom: kb.  $0.1\ \mu\text{m}$



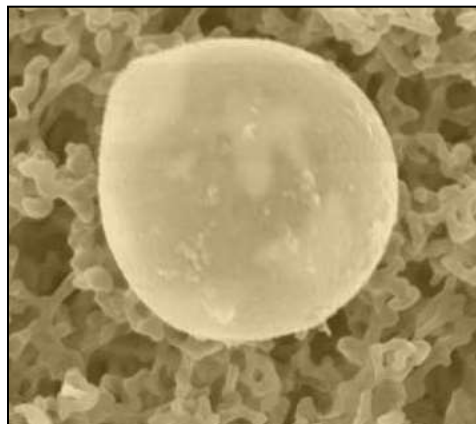
ammónium szulfát: kb.  $0.1\ \mu\text{m}$



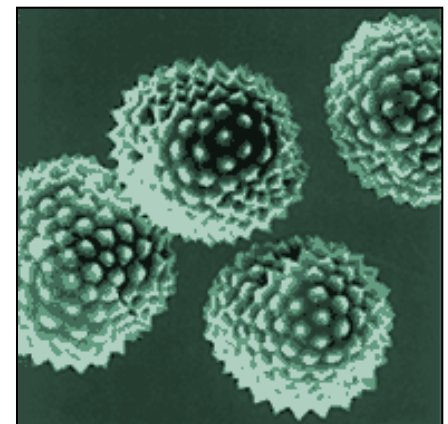
tengeri só:  $0.2 - 10\ \mu\text{m}$



ásványi por, homok:  $0.2 - 10\ \mu\text{m}$



pollen:  $10 - 100\ \mu\text{m}$

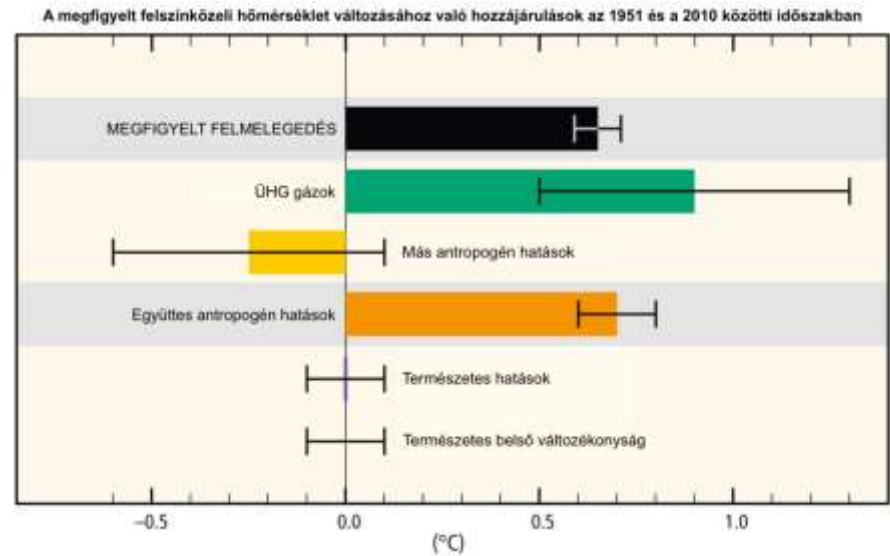
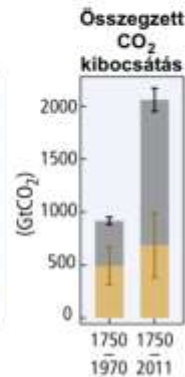
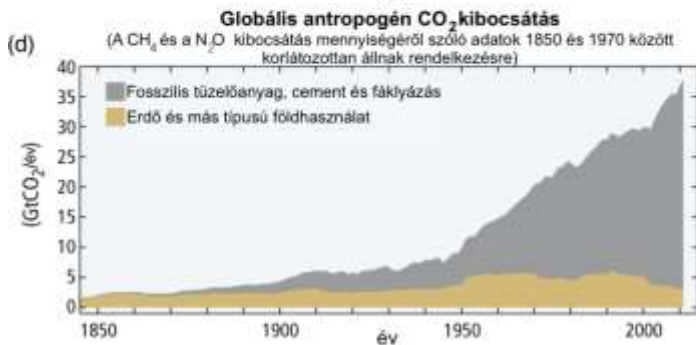
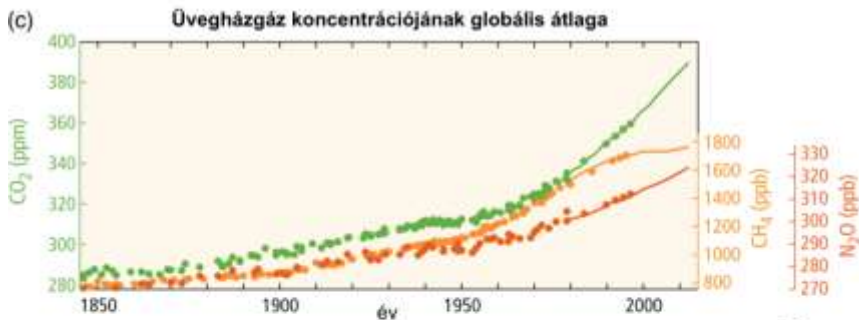
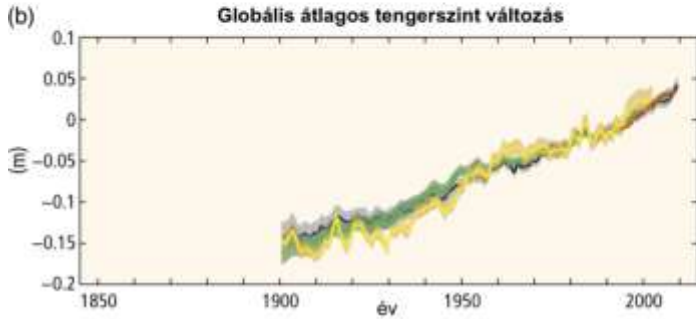
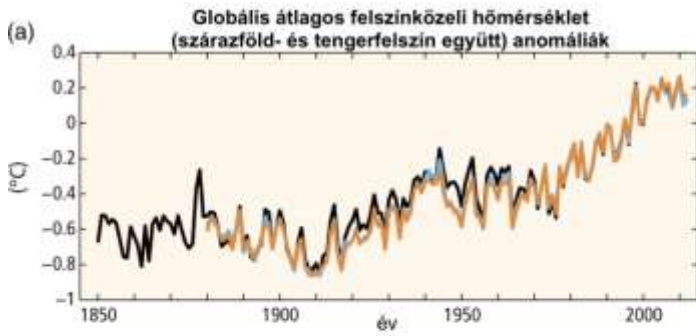


# Hogyan kerülnek a levegőbe?



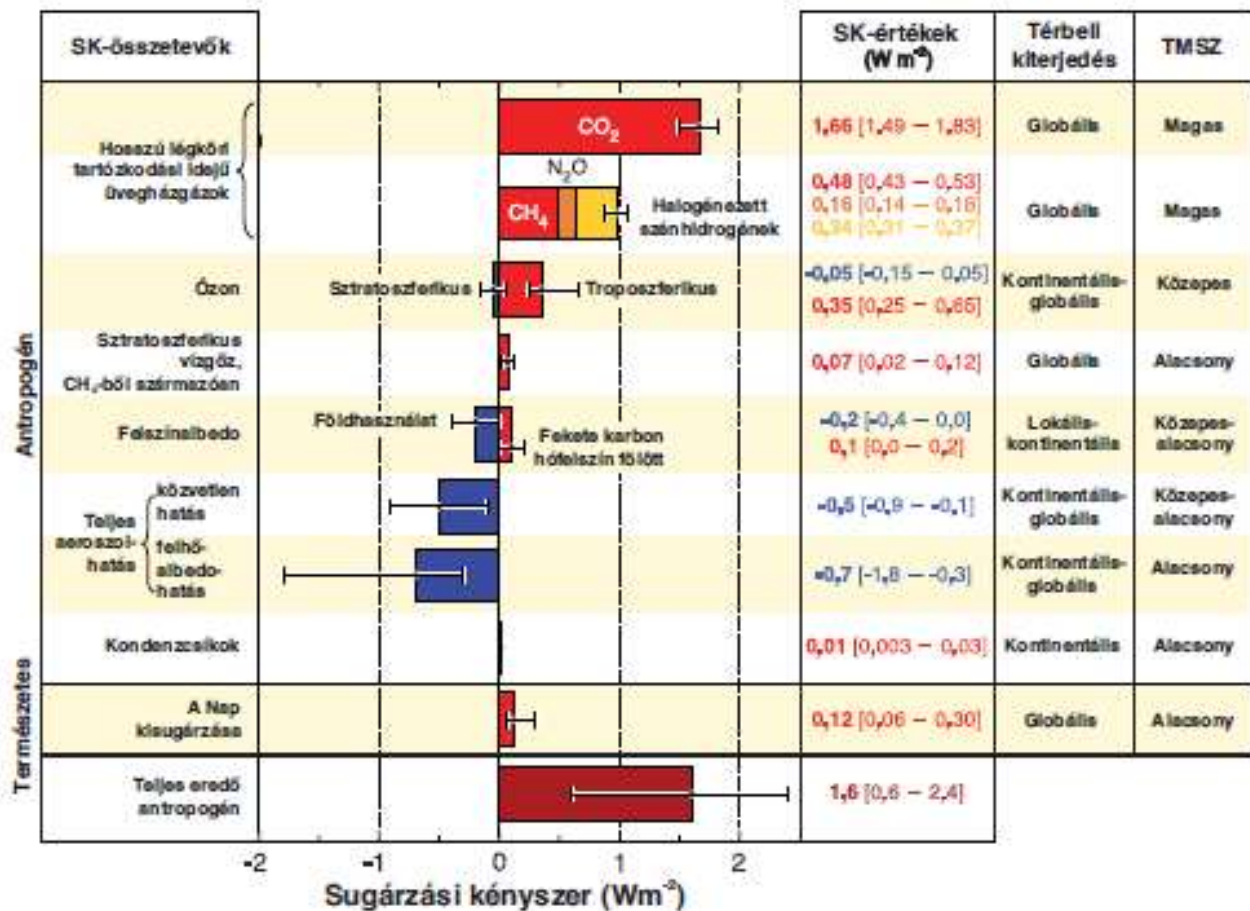


# Globális felmelegedés



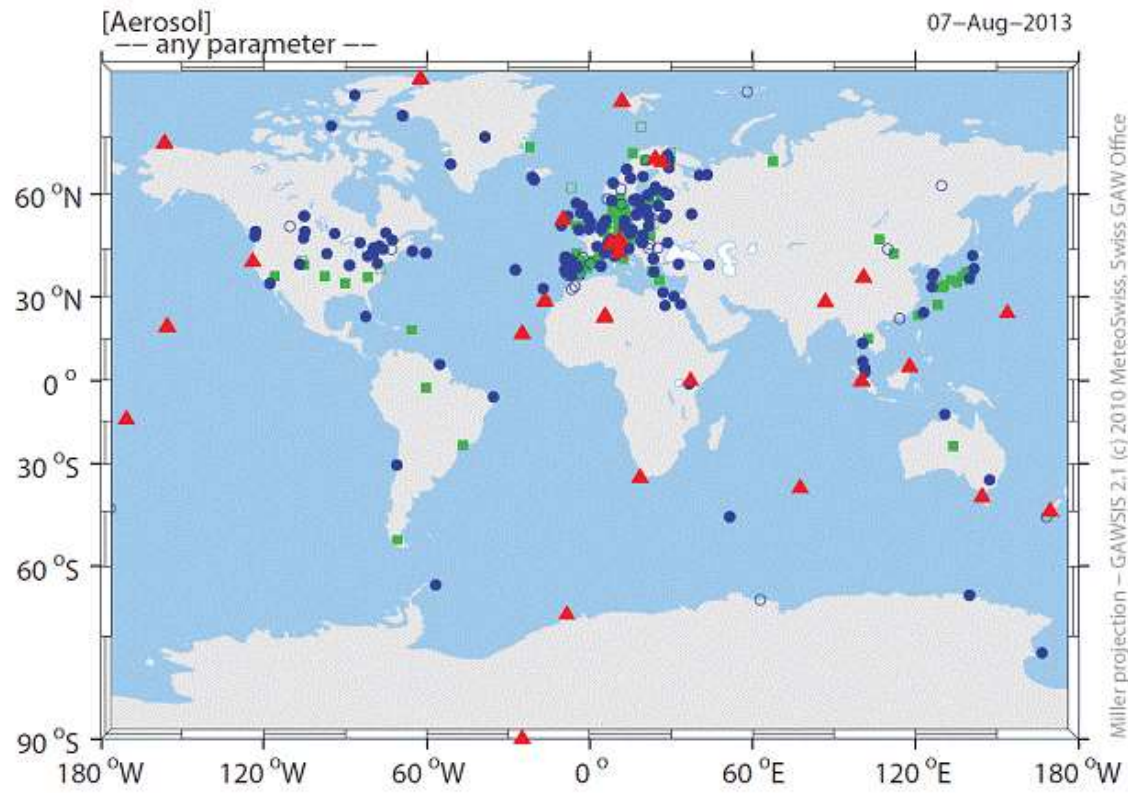
Forrás: IPCC 2014

# Sugárzási kényszer



IPCC 2007: WG1AR5

Forrás: IPCC 2014



▲ GAW Global Station    ● GAW Regional Station    ■ Contributing Station  
 Open symbols denote closed or inactive stations.



Forrás: Global Atmosphere Watch































































Neumayer-Station









































































